

NOTES:
 • INFORMATION SHOWN IS SUBJECT TO CHANGE WITHOUT NOTICE AND SHOULD BE USED AS GENERAL GUIDELINES IN THE PRELIMINARY PLANNING STAGES. PROJECT SPECIFIC DETAILS WILL BE PROVIDED BY THE ELEVATOR CONTRACTOR WHEN SELECTED.

HOISTWAY PLAN

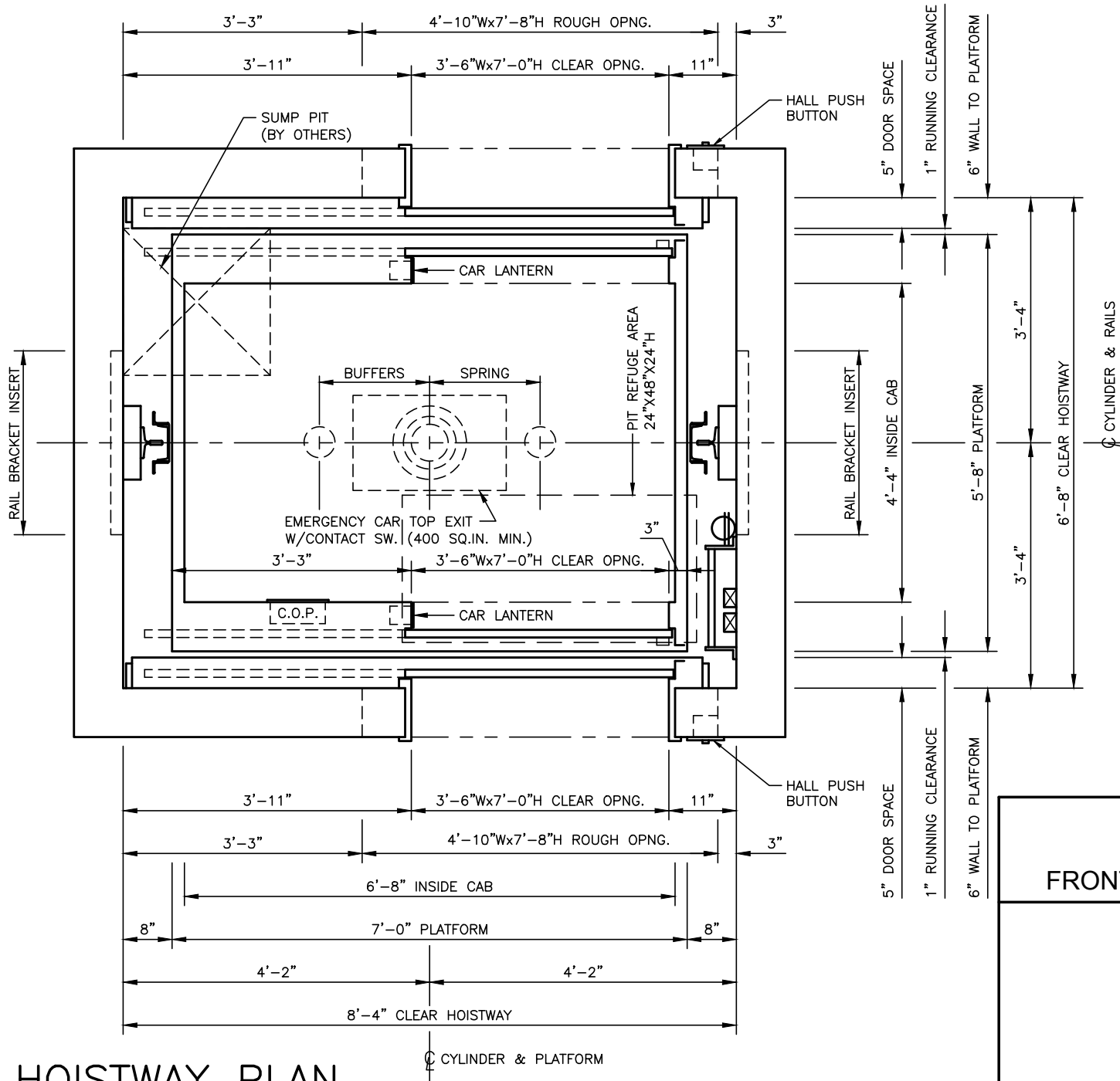
INGROUND
CAPACITY: 2500 LBS.
FRONT & REAR OPENING - LH / RH

DELAWARE
ELEVATOR
 RELIABLE · RESPONSIVE · RESPECTED

2210 ALLEN DRIVE
 SALISBURY, MD 21801
 PH: (410) 749-3489
 www.DelawareElevator.com

DWG FILE DEI-2500-IG-FR	DATE 03/07/16	SHEET 1 OF 1	REV -
----------------------------	------------------	-----------------	----------

NOTES:
 • INFORMATION SHOWN IS SUBJECT TO CHANGE WITHOUT NOTICE AND SHOULD BE USED AS GENERAL GUIDELINES IN THE PRELIMINARY PLANNING STAGES. PROJECT SPECIFIC DETAILS WILL BE PROVIDED BY THE ELEVATOR CONTRACTOR WHEN SELECTED.



HOISTWAY PLAN

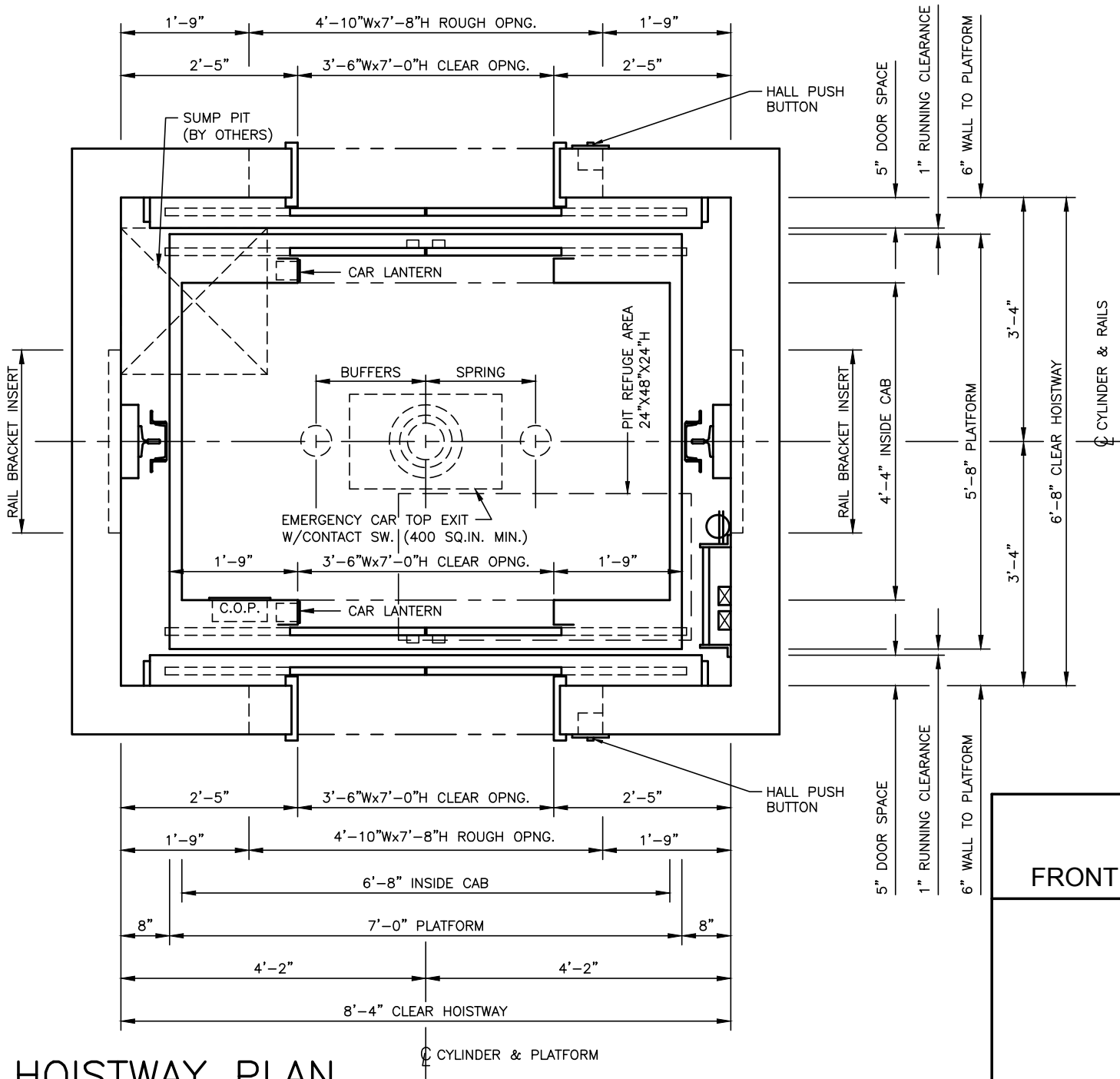
INGROUND
CAPACITY: 2500 LBS.
FRONT & REAR OPENING - RH / LH



2210 ALLEN DRIVE
 SALISBURY, MD 21801
 PH: (410) 749-3489
 www.DelawareElevator.com

DWG FILE DEI-2500-IG-FR	DATE 03/07/16	SHEET 1 OF 1	REV -
----------------------------	------------------	-----------------	----------

NOTES:
 • INFORMATION SHOWN IS SUBJECT TO CHANGE WITHOUT NOTICE AND SHOULD BE USED AS GENERAL GUIDELINES IN THE PRELIMINARY PLANNING STAGES. PROJECT SPECIFIC DETAILS WILL BE PROVIDED BY THE ELEVATOR CONTRACTOR WHEN SELECTED.



HOISTWAY PLAN

INGROUND
CAPACITY: 2500 LBS.
FRONT & REAR OPENING - CENTER



2210 ALLEN DRIVE
 SALISBURY, MD 21801
 PH: (410) 749-3489
 www.DelawareElevator.com

DWG FILE DEI-2500-IG-FR	DATE 03/07/16	SHEET 1 OF 1	REV -
----------------------------	------------------	-----------------	----------