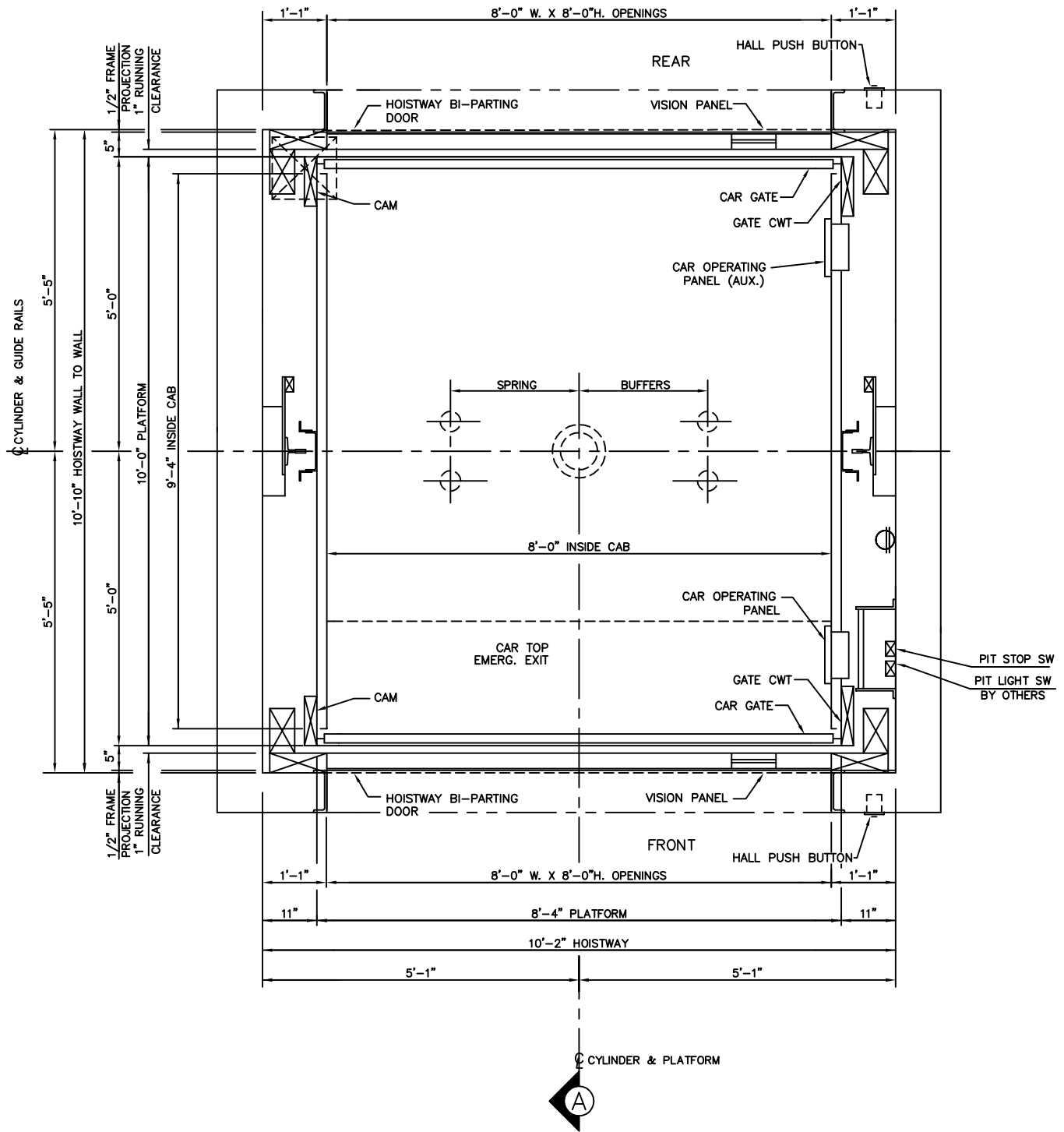


6000 LBS. FREIGHT INGROUND HYDRAULIC FRONT & REAR OPENING

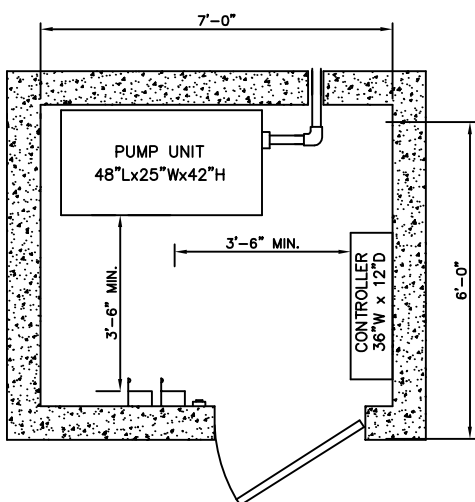


HOISTWAY PLAN

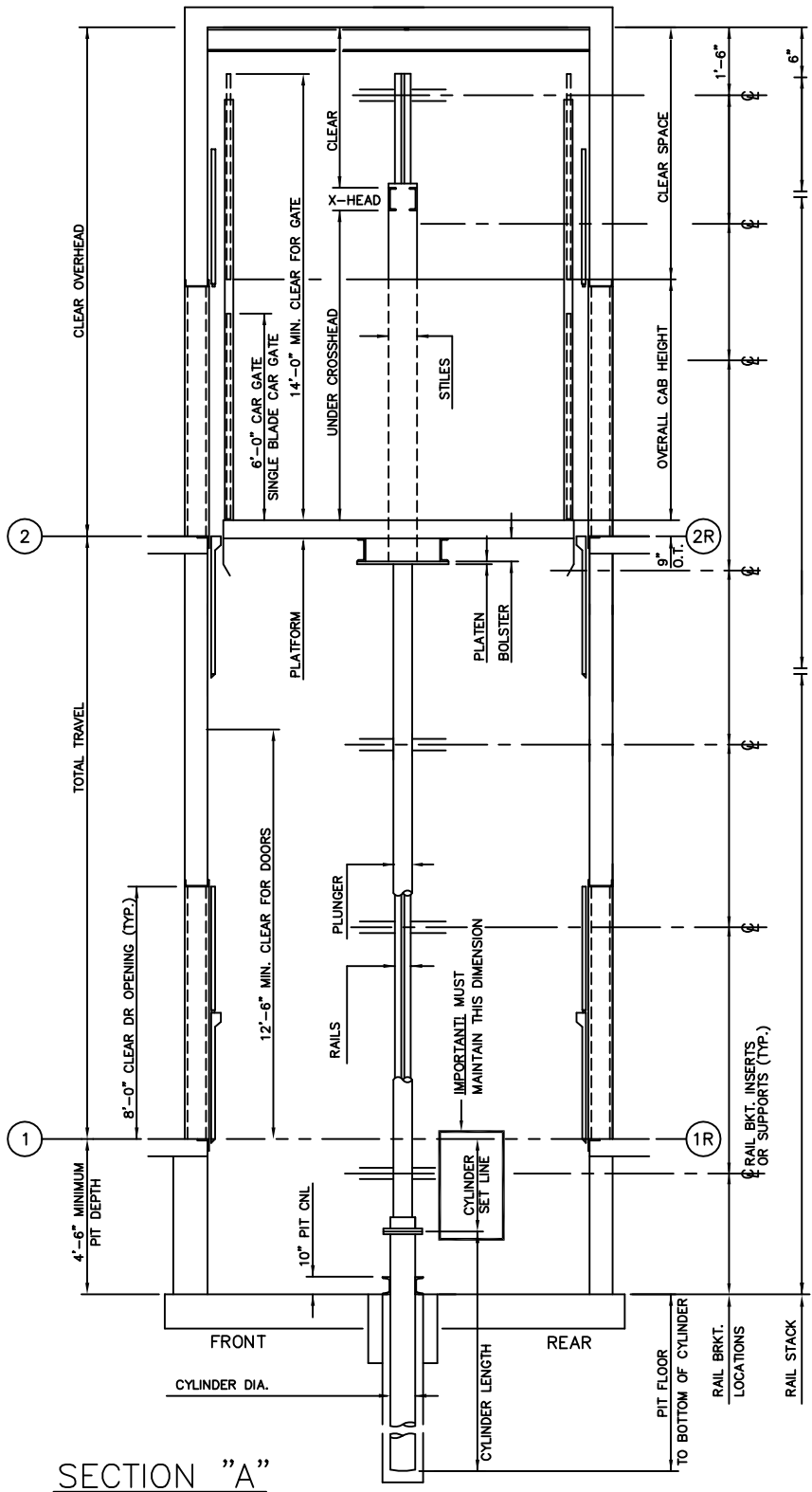
ALL DIMENSIONS ARE SUBJECT TO CHANGE WITHOUT NOTICE.
CONSULT DELAWARE ELEVATOR CO. FOR CONFIRMATION.

DELAWARE ELEVATOR
P.O. BOX 412, SALISBURY, MD 21803

6000 LBS. FREIGHT INGROUND HYDRAULIC FRONT & REAR OPENING



MACHINE ROOM DETAIL



SECTION "A"

ELEVATION PLAN

DELAWARE ELEVATOR
P.O. BOX 412, SALISBURY, MD 21803