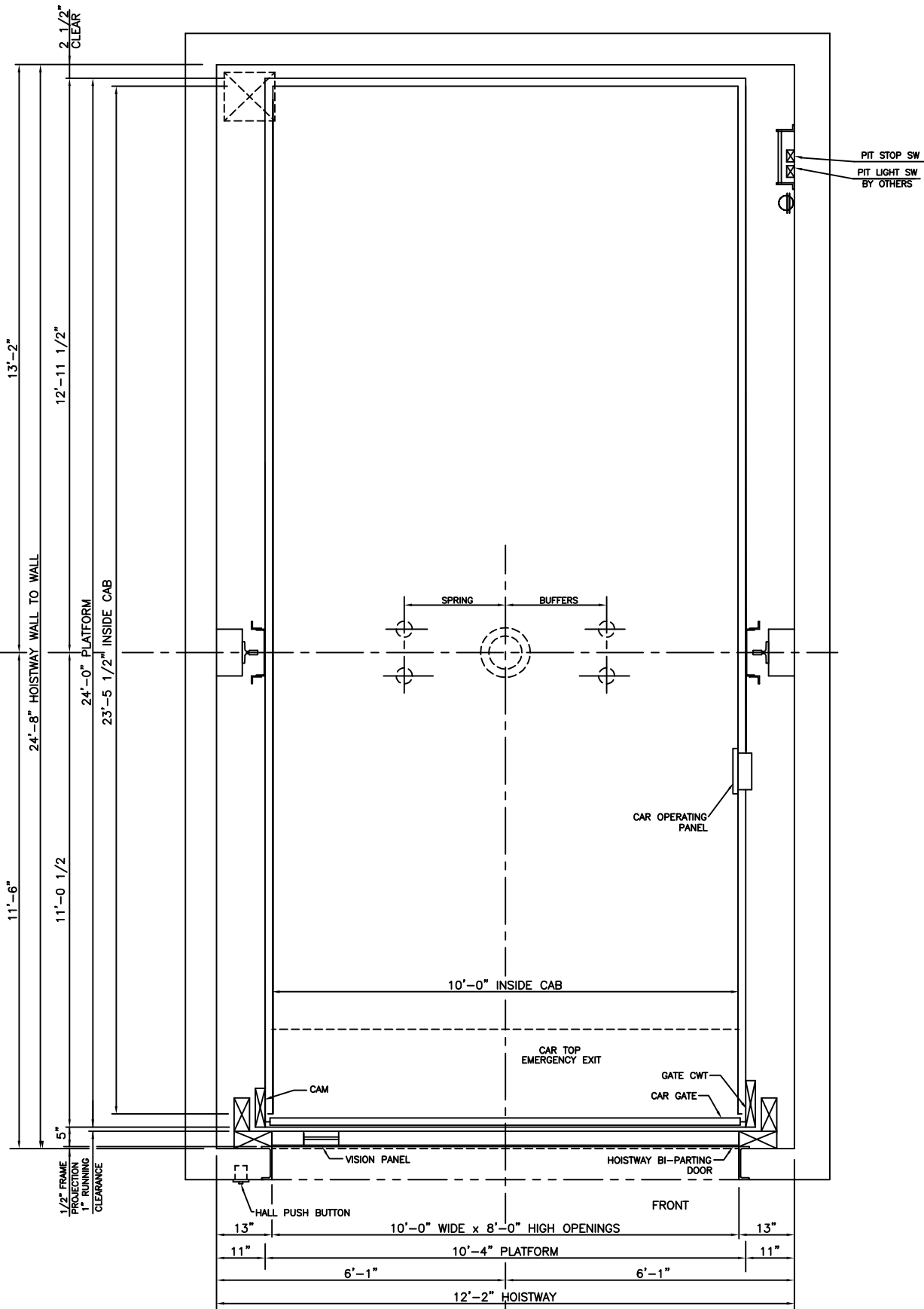


10,000 LBS. CLASS B INGROUND HYDRAULIC
FRONT OPENING

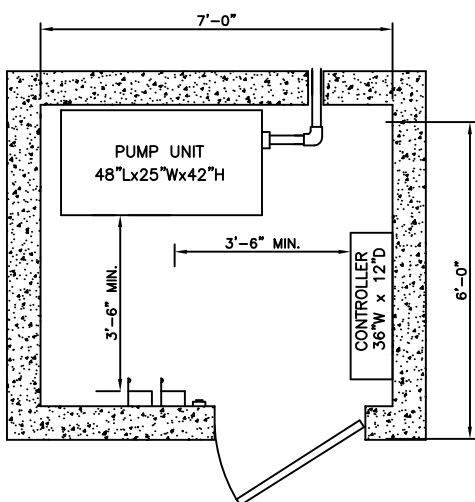


HOISTWAY PLAN

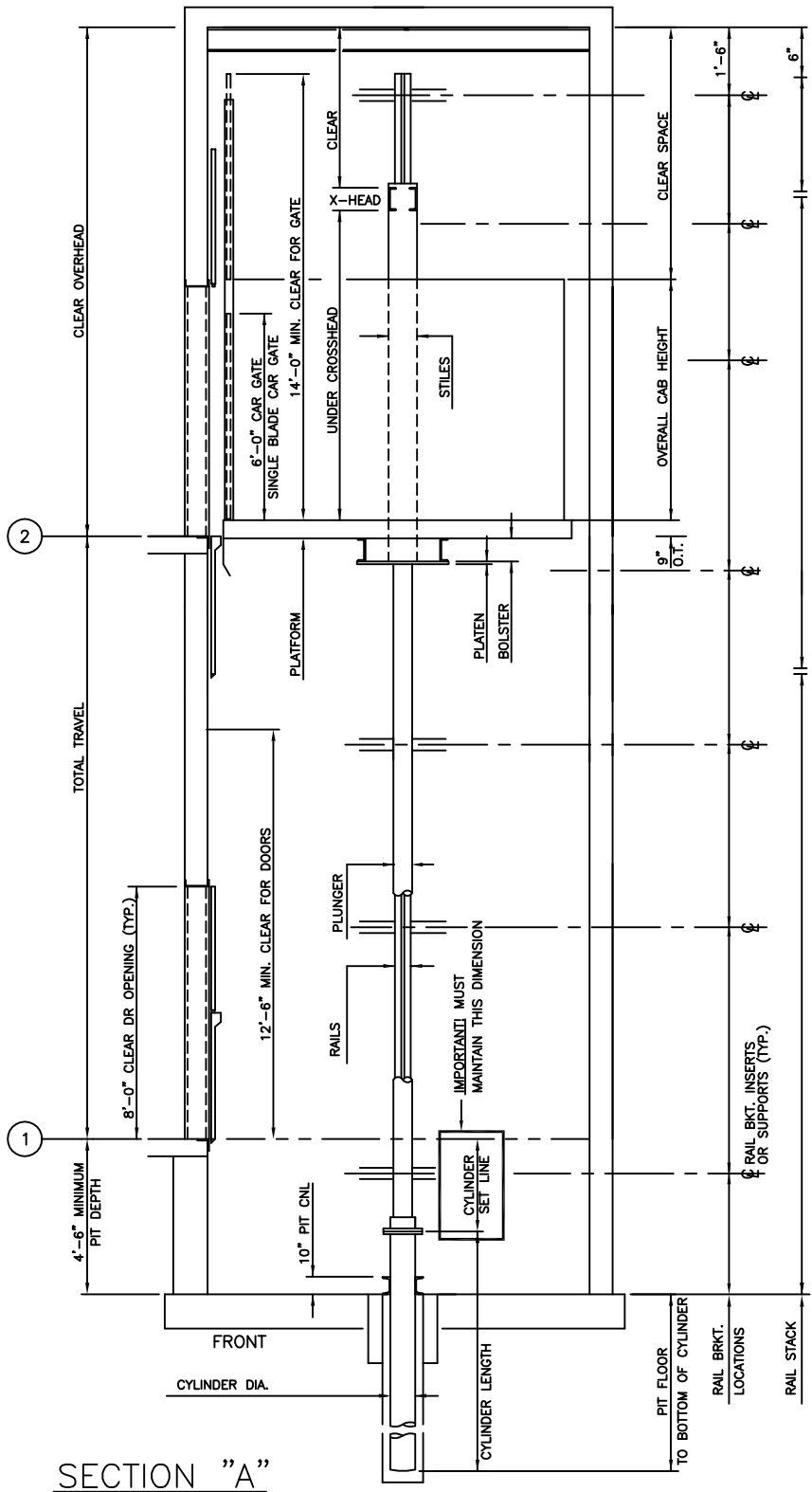
ALL DIMENSIONS ARE SUBJECT TO CHANGE WITHOUT NOTICE.
CONSULT DELAWARE ELEVATOR CO. FOR CONFIRMATION.

DELAWARE ELEVATOR
P.O. BOX 412, SALISBURY, MD 21803

10,000 LBS. CLASS B INGROUND HYDRAULIC FRONT OPENING



MACHINE ROOM DETAIL



SECTION "A"

ELEVATION PLAN

DELAWARE ELE TOR
P.O. BOX 412, SALISBURY, MD 21803