

NOTES:

- INFORMATION SHOWN IS SUBJECT TO CHANGE WITHOUT NOTICE AND SHOULD BE USED AS GENERAL GUIDELINES IN THE PRELIMINARY PLANNING STAGES. PROJECT SPECIFIC DETAILS WILL BE PROVIDED BY THE ELEVATOR CONTRACTOR WHEN SELECTED.
- DIMENSIONAL INFORMATION SHOWN IS FOR CAR TRAVELS UP TO 13'-10". CONSULT DELAWARE ELEVATOR FOR HOISTWAY REQUIREMENTS WITH TRAVELS EXCEEDING 13'-10".

HOISTWAY PLAN

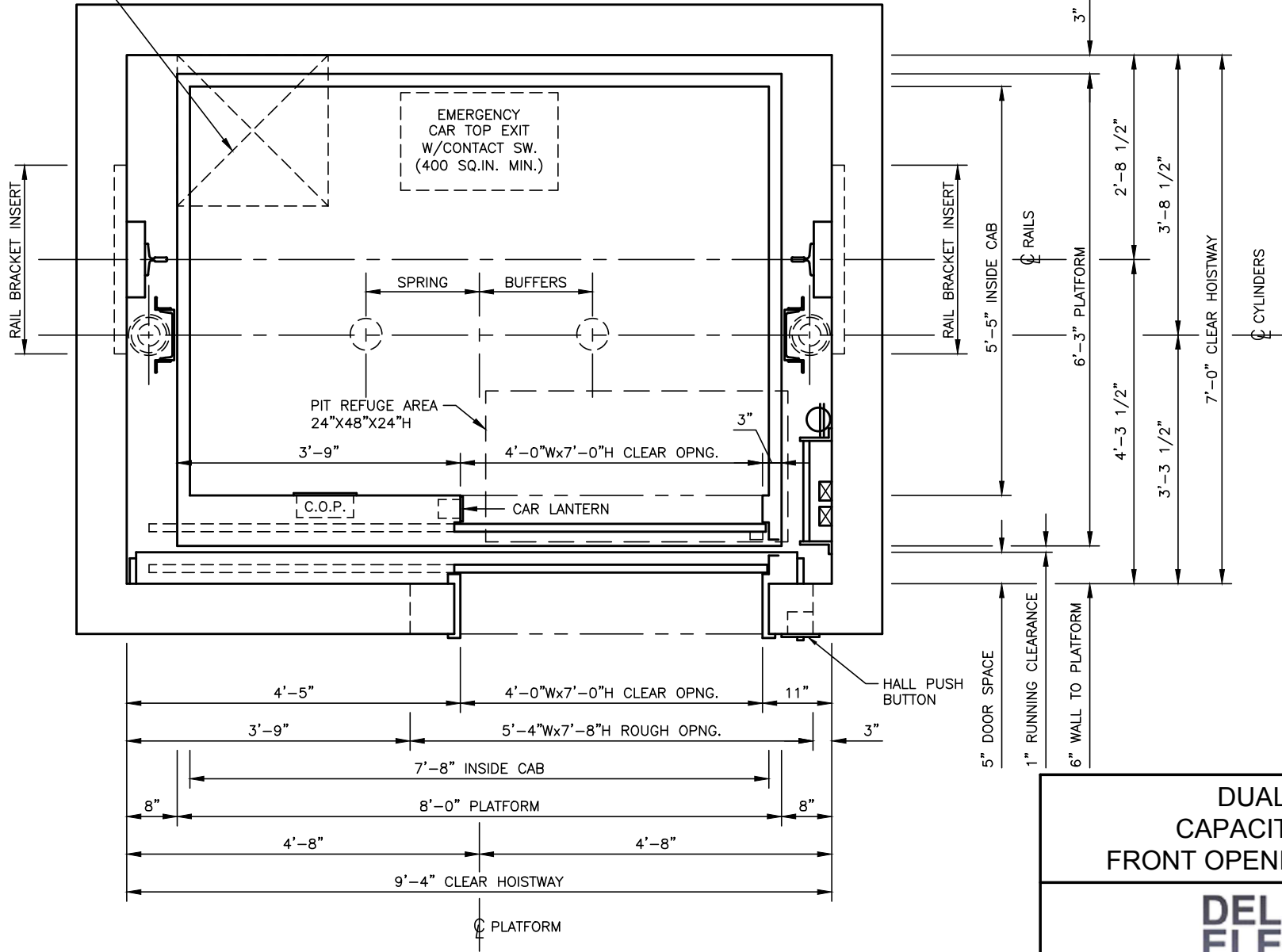
DUAL HOLES
CAPACITY: 4000 LBS.
FRONT OPENING - LEFT HAND



2210 ALLEN DRIVE
 SALISBURY, MD 21801
 PH: (410) 749-3489
 www.DelawareElevator.com

DWG FILE	DATE	SHEET	REV
DEI-4000-DH	03/07/16	1 OF 1	-

SUMP PIT (BY OTHERS) 8" MIN. TO SUMP



NOTES:

- INFORMATION SHOWN IS SUBJECT TO CHANGE WITHOUT NOTICE AND SHOULD BE USED AS GENERAL GUIDELINES IN THE PRELIMINARY PLANNING STAGES. PROJECT SPECIFIC DETAILS WILL BE PROVIDED BY THE ELEVATOR CONTRACTOR WHEN SELECTED.
- DIMENSIONAL INFORMATION SHOWN IS FOR CAR TRAVELS UP TO 13'-10". CONSULT DELAWARE ELEVATOR FOR HOISTWAY REQUIREMENTS WITH TRAVELS EXCEEDING 13'-10".

HOISTWAY PLAN

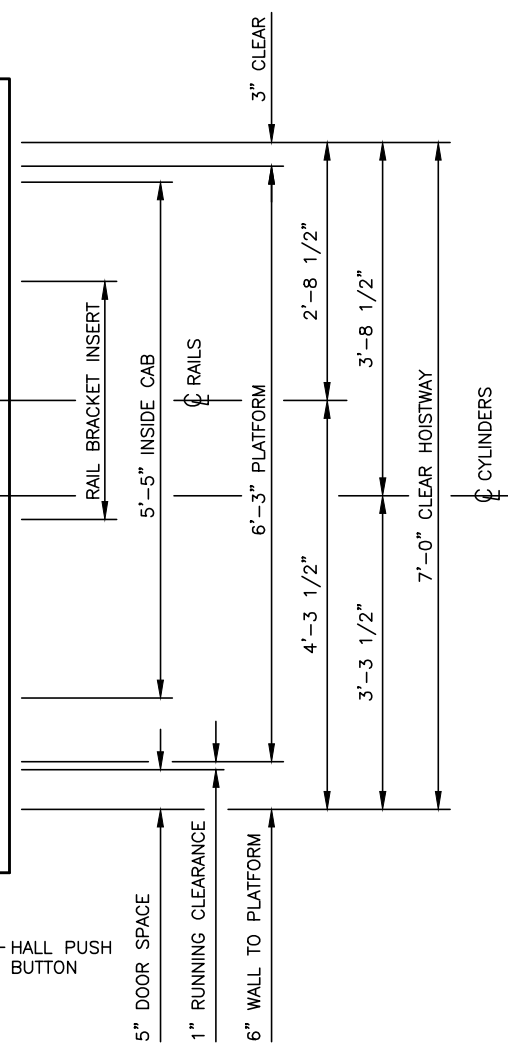
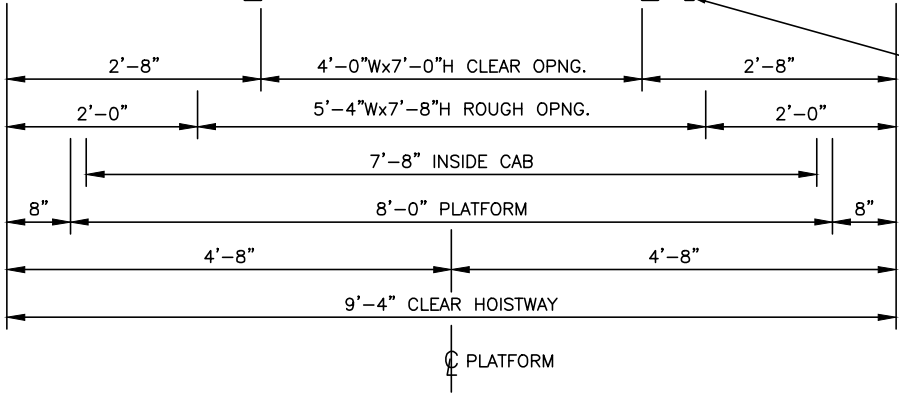
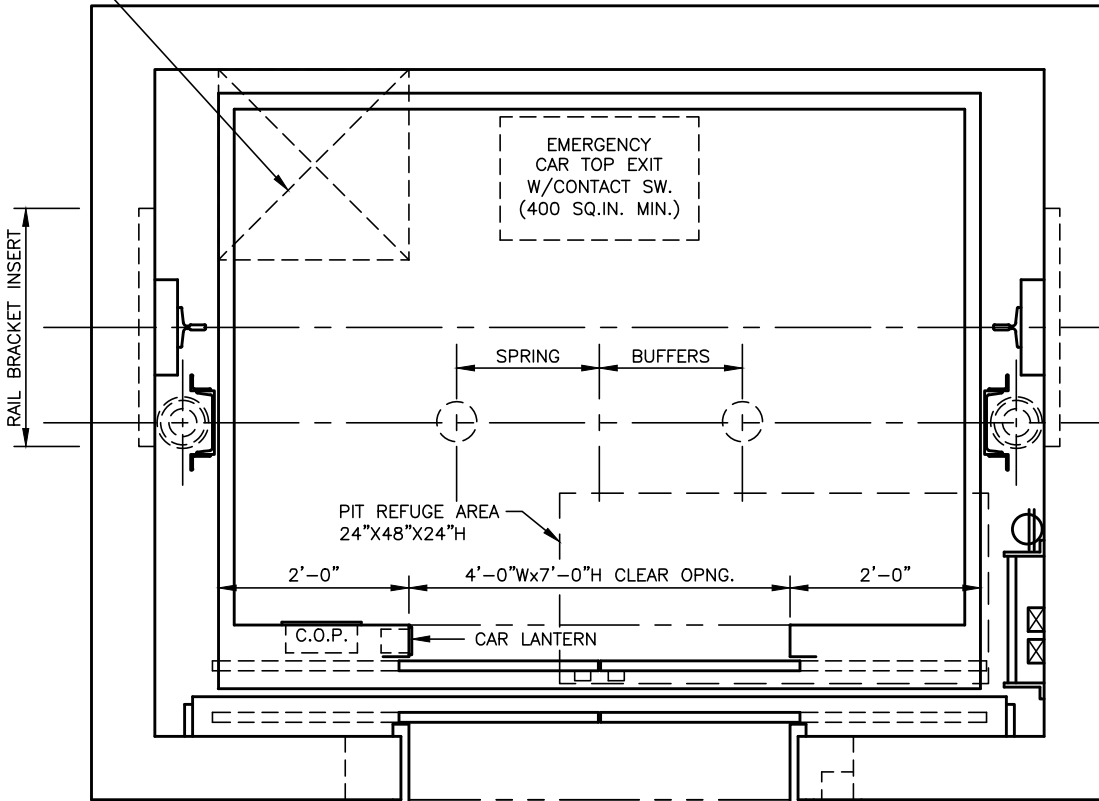
DUAL HOLES
CAPACITY: 4000 LBS.
FRONT OPENING - RIGHT HAND



2210 ALLEN DRIVE
 SALISBURY, MD 21801
 PH: (410) 749-3489
 www.DelawareElevator.com

DWG FILE	DATE	SHEET	REV
DEI-4000-DH	03/07/16	1 OF 1	-

SUMP PIT (BY OTHERS) 8" MIN. TO SUMP



NOTES:

- INFORMATION SHOWN IS SUBJECT TO CHANGE WITHOUT NOTICE AND SHOULD BE USED AS GENERAL GUIDELINES IN THE PRELIMINARY PLANNING STAGES. PROJECT SPECIFIC DETAILS WILL BE PROVIDED BY THE ELEVATOR CONTRACTOR WHEN SELECTED.
- DIMENSIONAL INFORMATION SHOWN IS FOR CAR TRAVELS UP TO 13'-10". CONSULT DELAWARE ELEVATOR FOR HOISTWAY REQUIREMENTS WITH TRAVELS EXCEEDING 13'-10".

HOISTWAY PLAN

DUAL HOLES
CAPACITY: 4000 LBS.
FRONT OPENING - CENTER OPENING

DELAWARE ELEVATOR
RELIABLE · RESPONSIVE · RESPECTED

2210 ALLEN DRIVE
 SALISBURY, MD 21801
 PH: (410) 749-3489
 www.DelawareElevator.com

DWG FILE DEI-4000-DH	DATE 03/07/16	SHEET 1 OF 1	REV -
--------------------------------	-------------------------	------------------------	-----------------